

## Reduce print costs, provide a convenient, productive print environment

Organizations in any industry - including finance, healthcare, insurance, education, legal and many others - are looking for ways to reduce costs, better manage their resources, and drive employee productivity - all while incorporating a sound strategy to drive environmental initiatives and reduce waste. Equitrac print management and cost recovery solutions deliver these benefits by helping organizations gain control of their printing environment through features such as Rules & Routing.

### End user convenience, increased productivity

With Equitrac's Rules & Routing users no longer have the hassle of walking to their prints jobs only to find out that the printer is in use with a large job, is out of paper, or has a paper jam - requiring the user to go back and resubmit their print job to another printer.

Rules & Routing provides a convenient print environment to automatically route print jobs to another printer based on device status. Equitrac notifies the user with a customized message informing them what print rule has been applied and where the print job can be retrieved.

Unique features such as Equitrac's sophisticated "least-cost" routing provides the user with the option to choose the most appropriate printer based on the cost of the job. Equitrac shows the user the different costs associated with printing a document at various printers and allows the user to send the print job to the most efficient printer or continue sending it to the initial printer.

The dollar amount saved by the user re-directing print jobs to the most cost efficient printer is easily viewed in an Equitrac-created report.

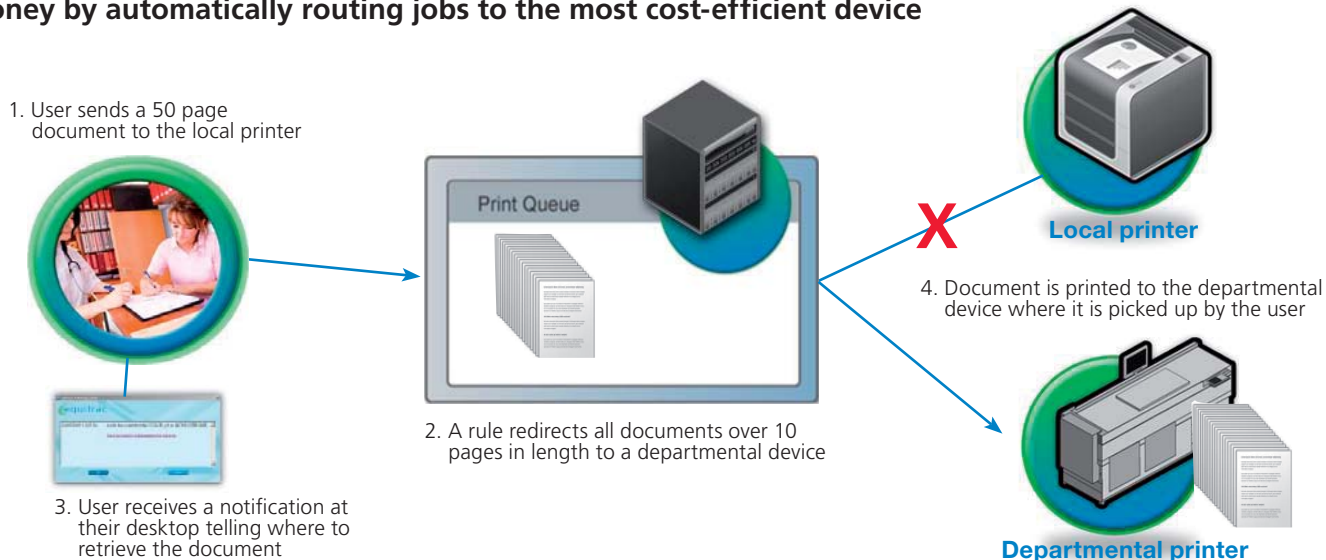
### Reduce costs, optimize devices

Organizations can enforce business print rules that will allow, hold, redirect and deny printing of documents based on who is printing, where the document is being printed and on the attributes of the document.

By applying print rules based on job attributes such as color, number of pages, simplex and duplex or even from the applications being used to print from (such as a web browser), organizations can re-redirect print jobs to the most cost-efficient print device anywhere on the network. Organizations can now get the most out of their lower price-per-page networked devices, and reduce the number of print jobs going to the more expensive price-per-page desktop printers. All of this is managed by the administrator through a simple, easy-to-use, wizard application for rules building - there is no programming required.



## Save money by automatically routing jobs to the most cost-efficient device



# Rules & Routing

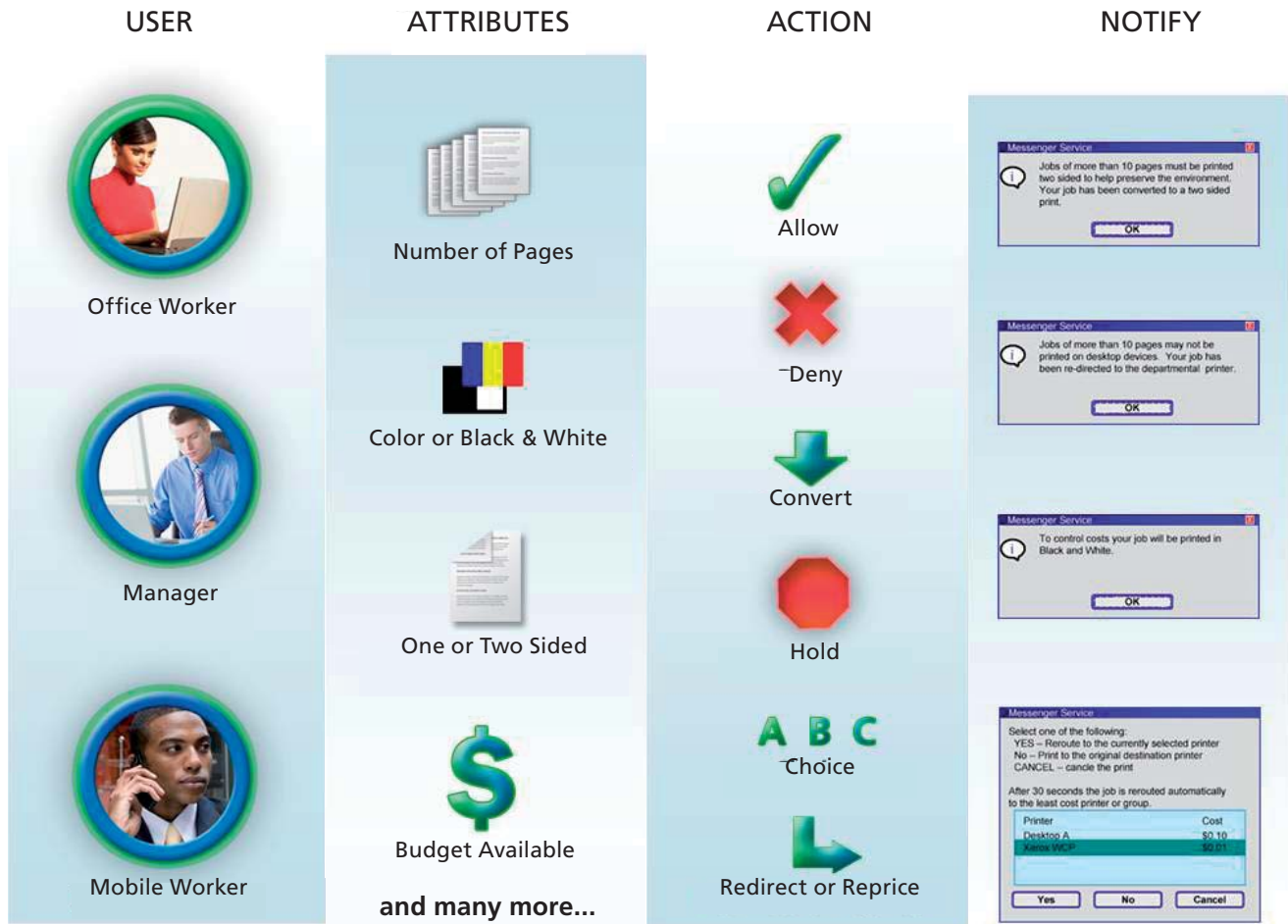
## Manage color, budgets and environmental impact

With Equitrac's Rules & Routing, organizations can establish color quotas and account balances per user or at the department level, with rules that deny printing based on a user going over their quota or balances. This feature is very important for educational settings who need to manage and capture student print and copy services, but also for keeping any organizations' users accountable to their departmental budgets. By establishing simple print rules such as forced monochrome and duplex printing using Equitrac Rules & Routing, an organization can dramatically reduce the number of pages that get printed or thrown into the recycle bin.

## Automatically encourage or enforce good print habits

When a job is printed, rules & routing within Equitrac looks at who the user is, and at a wide range of job attributes including number of pages, whether the job contains color, is one sided or two sided and many more. Equitrac then compares the user and job attribute information against print rules defined for the organization and will allow, convert, offer a user choice, deny, hold or redirect and recost the job. The user will be alerted to what action has been taken.

The breadth of actions available to select from provides organizations maximum flexibility in setting up printing policies and managing related costs.



For more information on Equitrac's Rules & Routing go to [www.equitrac.com](http://www.equitrac.com)

World Headquarters: 1000 South Pine Island Road, Suite 900, Plantation, FL 33324, USA  
 Software Development Center: 450 Phillip Street Waterloo, ON N2L 5J2, Canada  
 Teleport Towers, Kingsfordweg 151, 1043 GR Amsterdam, The Netherlands  
 1st Floor 45 Beech Street, London, England EC2Y 8AD, United Kingdom  
[www.equitrac.com](http://www.equitrac.com)

P 954 327 0183  
 P 519 885 2458  
 P 31 20 586 4300  
 P 44 207 072 0970

F 954 475 7295  
 F 519 746 7931  
 F 31 20 586 4210  
 F 44 207 072 0977

